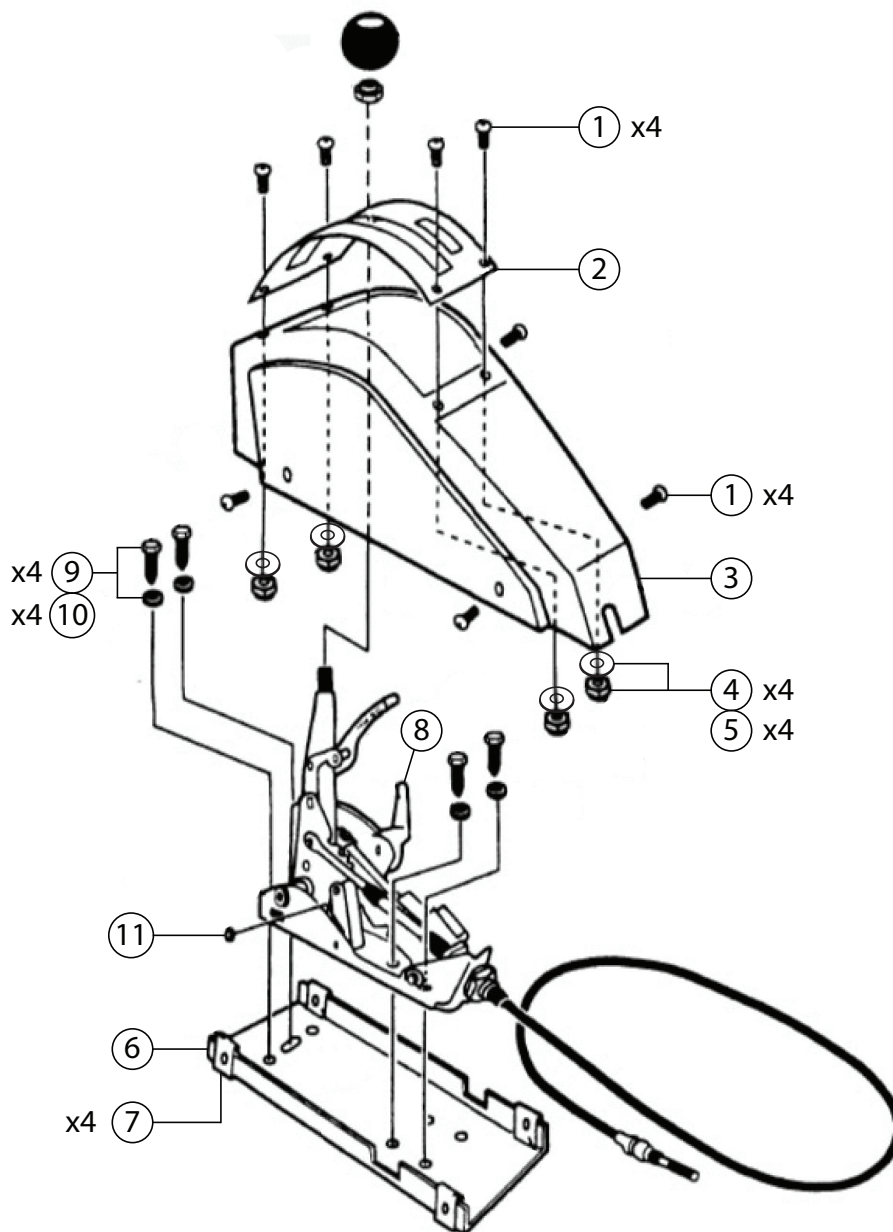




# Installation Instructions

## 1300055

### FITS HURST QUARTER STICK & PISTOL GRIP SHIFTERS W/FRONT CABLE EXIT



ITM #	PART #	DESCRIPTION	QTY.
1	3400940	#8-32 x 3/8" Btnhd Screw	8
2	1958654	Plate- Gear Shifter Indicator	1
3	1400020	Shifter Cover	1
4	3401298	#8 Flat Washer	4
5	97002566	#8-32 Nylock Nut	4
6	1958640	Mounting Plate- Console	1

ITM #	PART #	DESCRIPTION	QTY.
7	1790088	U-type Speed Nut	4
8	1750102	Reverse Lock-Out Lever - Flat	1
9	2725699	#14 x 1" Hex Hd Screw	4
10	3400108	1/4" Flat Washer	4
11	2280112	1/4" ID Spacer	1
12	1320026	Gear Shift Indicator Decal (not shown)	4
13	1028849	Loctite Threadlocker (not shown)	1

## OVERVIEW:

1. Take a moment to read and understand these instructions before installing your Hurst Quarter Stick Shifter Cover.

**NOTE:** Inventory all parts now before continuing and if necessary, report any missing items to our tech line. This will avoid potentially stranding your vehicle until any missing replacement parts arrive.

### WARNING:

For maximum safety, perform this installation on a clean, level surface with engine turned off. Chock wheels and do not attempt installation until you are confident your vehicle will not move.

## REMOVAL AND MODIFICATION OF QUARTER STICK SHIFTER:

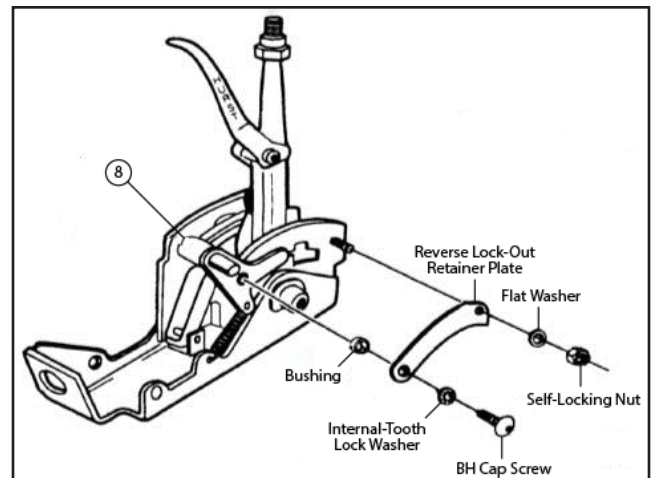
2. If Quarter Stick shifter is equipped with a Neutral/Park Start safety switch, disconnect negative (-) battery cable.

### WARNING:

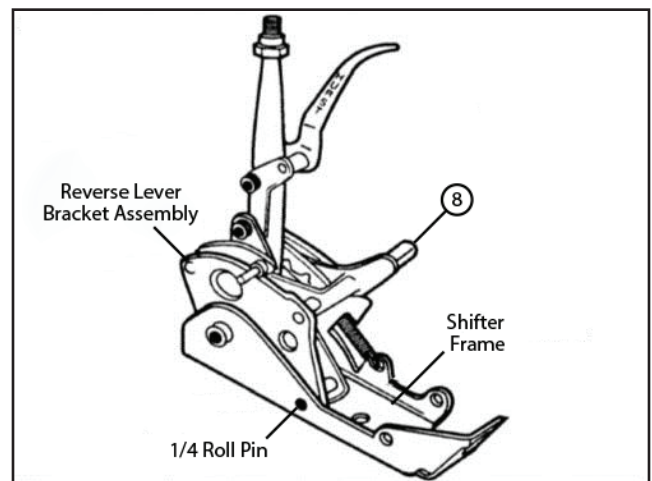
When removing or connecting the battery cable terminal, use care to avoid intermittent contact (arcing) between battery post and terminal end. This generates voltage spikes that can damage sensitive ECM (Electronic Control Modules) components or memory circuits.

3. Place shifter stick into "Neutral" position and remove assembly from vehicle.
4. Remove extension spring connected to bottom of Reverse lever and drivers side of shifter frame. Remove second extension spring connected to  $\frac{1}{8}$ " split roll pin (located at top of "U" shape bracket) and bottom of shifter frame.
5. Carefully remove button head cap screw and lock washer from front of Reverse Lock/out retainer plate using a  $\frac{1}{2}$ " hex key wrench. Loosen self-locking nut on rear of retainer plate using a  $\frac{3}{32}$ " box wrench (do not remove). Pivot Reverse Lock/out retainer plate upward.

**NOTE:** A steel bushing and small shims are used for alignment and to provide free movement for Reverse Lock/out lever. These shims and bushing must be replaced in their original location when installing **reverse lock-out lever (8)**.



6. Lay shifter down on reverse lever side. Using a flat tip punch and hammer, drive roll pin (located at bottom of shifter frame)  $\frac{1}{4}$ " inward. Lift and pivot reverse lever bracket assembly forward and remove from shifter.



7. Stand shifter upright, place **ID spacer (11)** between shifter frame and “U” shaped roll pin bracket. Using a flat tip punch, drive roll-pin through spacer and back into shifter frame.
8. Insert bushing (removed step 5) into reverse lock/out lever. Install lever into shifter assembly using bushing and shims to provide proper alignment. Re-align Reverse lock/out retainer plate and replace button head screw. Tighten self-locking nut securely. Check Reverse lever to be sure it moves freely. Back out button head screw and apply **Loctite® Threadlocker (13)** on lock plate threads. Re-tighten button head screw.
9. Install (x2) extension springs (removed step 4).

## INSTALLATION OF HURST QUARTER STICK SHIFTER COVER:

**NOTE:** If shifter is a new install or if it has not previously been installed in vehicle, follow instructions for shifter prior to installing console.

10. Place **console mounting plate (6)** under shifter frame and attach assembly to floor tunnel using (x4 ea.) **screws (9)** and **flat washers (10)**.
11. Install (x4) **speed nuts (7)** onto both sides of console mounting plate (extruded side of speed nut facing inside of plate).
12. Remove knob from shifter stick. Remove socket head screw holding chrome trigger to shifter stick, being careful not to lose any trigger shims during removal. Keep socket head screw, trigger, and shims together as you set them aside.
13. Place **shifter cover (3)** over shifter with cut out for cable facing forward and align with mounting plate side holes. If cover bottom contacts floor before mounting holes are aligned, trim cover to fit. Once it fits properly, remove cover.

**NOTE:** To modify components for fit; mark each contact point then little at a time, trim just those particular points. Re-install to check for fitment and if necessary, repeat process until components comfortably, without compromising their function.

14. Place **gear indicator plate (2)** onto cover with slot for Reverse lock-out lever toward drivers side. Fasten forward portion of plate using (x2 ea.) **screws (1)**, **flat washers (4)** and **nuts (5)**.
15. Gently form plate to contour of cover and fasten bottom portion using (x2 ea.) **screws (1)**, **flat washers (4)** and **nuts (5)**.
16. Place cover over shifter and attach to mounting plate using (x4) **screws (1)**.
17. Install chrome trigger with shims (removed step 8), apply **Loctite® Threadlocker (13)** onto threads and tighten socket head screw securely (do not overtighten). Thread knob onto shifter stick, turn to desired position and tighten jam nut against knob.
18. Make sure shifter stick is in “Neutral” position. Move stick rearward one gear position and apply **decals (12)** (with proper letter or number aligned) to indicate gear selection. Repeat for remaining existing gear selections.

**NOTE:** Decal should be cut to size in order for letter or number to be applied easily onto console top plate. Peel backing off of decal then place it onto top plate, working slowly to avoid creating air pockets. Carefully remove top layer from decal.

19. Move shifter through all gears, ensuring each one engages properly for proper function.
20. Reconnect negative (-) battery cable if previously removed.

Congratulations, the installation of your **Hurst Quarter Stick Shifter Cover** is now complete!

